

## PATIENT INSTRUCTIONS – RISK SCORE TEST OF COMMON CANCERS

**PLEASE READ THESE INSTRUCTIONS TO THE END BEFORE ATTEMPTING TO COLLECT YOUR SAMPLE.**

### The sample test kit contains:

- Sample tube in plastic case  
(DNA sampling material: Oragene®DNA solution OG-510 - kit contains stabilising liquid.)
- Test request form (A)
- Informed consent form (B)
- Family history questionnaire (C)
- Return box
- Security seal sticker
- Pre-paid postage return envelope

### Collection precautions

#### 1 Before taking sample:

- Wash your hands.
- Do NOT eat, drink, smoke or chew gum for 30 minutes before giving a saliva sample.
- Do NOT remove the plastic film from the funnel lid.
- Only use if test kit is intact. **Do not use if kit is broken.** Contact customer service to request new kit.
- Check test kit expiration date before taking the sample. **Do not use if kit is expired.** See sample tube for expiration date. Contact customer service to request new kit.
- Before taking the sample, please make sure that kit's funnel lid solution is at room temperature. Warm the lid in your hands for a minute and shake.

### Before collecting a sample

#### 2 Write down the sample tube barcode in the box below:

This is a 14 digit number that can be found on the side of the sample tube. Keep this sheet in a safe place for your records.



#### 3 Carefully read the informed consent form (B) enclosed in the test kit and sign.

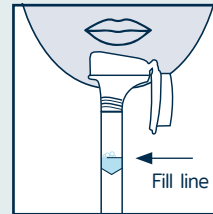
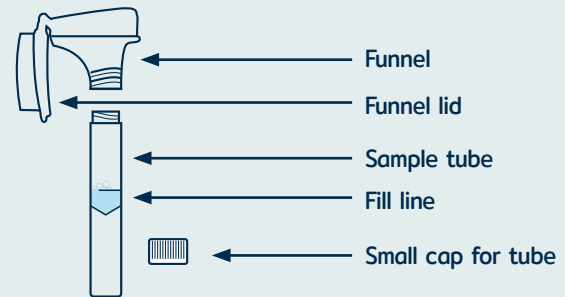
Please also complete the **test request form (A)** and **family history questionnaire (C)** provided.

You will need to include these in the return box with your sample.

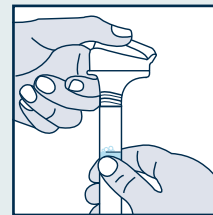
### Collecting a sample

Most people take between 2 and 5 minutes to deliver a saliva sample following the steps below.

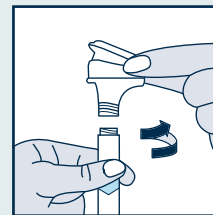
#### 4 Remove the sample tube from the plastic packaging.



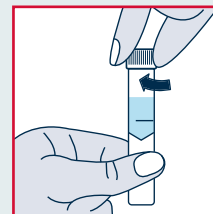
Spit into funnel until the amount of liquid saliva (not bubbles) reaches the fill line shown on the sample tube.



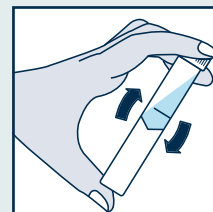
Hold the tube upright with one hand. Close the funnel lid with the other hand (as shown) by firmly pushing the lid until you hear a loud click and it's closed tightly. The liquid in the lid will release into the tube to mix with the saliva. Make sure that the lid is closed tightly.



Hold the tube upright. Unscrew the funnel from the tube.



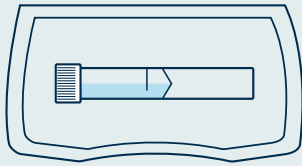
**USE THE SMALL CAP PROVIDED TO SEAL THE SAMPLE IN THE TUBE. IT IS IMPORTANT THAT YOU FIRMLY SCREW THE CAP CLOSED. FAILURE TO DO SO WILL RESULT IN YOUR SAMPLE LEAKING AND THE LABORATORY UNABLE TO RUN THE TEST.**



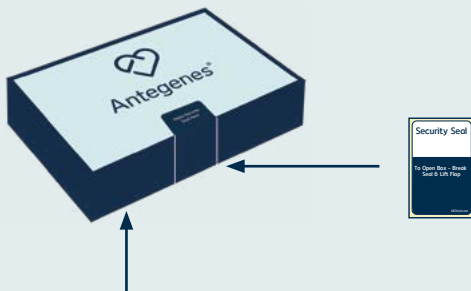
Shake the capped tube for 5 seconds. Discard or recycle the funnel.

## How to safely return a sample

- 5** Place the sample tube back into the plastic case.

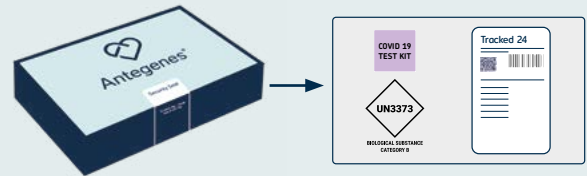


- 6** Place all of the following in the return box provided and seal securely using the security seal sticker provided in the position indicated on the box.



- Sample tube enclosed in plastic case
- Completed test request form (A)
- Signed informed consent form (B)
- Completed family history questionnaire (C)

- 7** Place the return box into the grey pre-paid postage return envelope provided.



- 8** Write down the Royal Mail Tracked 24 reference number in the box below:

- 9** Post the box in any Royal Mail postbox or via a Post Office Counter.

- 10** Test results are available within 6 weeks from the sample arriving to the laboratory.

These instructions for use are for different risk score tests: breast cancer (AnteBC), prostate cancer (AntePC), colorectal cancer (AnteCRC), melanoma (AnteMEL), set of tests for women (AnteCancerW, including AnteBC, AnteCRC and AnteMEL) and set of tests for men (AnteCancerM, including AntePC, AnteCRC and AnteMEL). All tests are in vitro diagnostic medical devices and CE-marked.

### What should I do if I incorrectly take the sample?

If the DNA sample was taken incorrectly, please contact customer services. After our confirmation, you may throw the saliva collection kit in the household waste; there are no special requirements.

### Which methodology is used for testing?

DNA sample extracted from the saliva collection kit is analysed by second-generation genotyping using the Illumina Global Screening Array-24 (GSA) v3.0 chip and Illumina iSCAN sequencer. The bioinformatics workflow developed by Antegenes is used to analyse the genetic data and calculate the polygenic risk score.

The risk scores underlying the risk score tests (Mavaddat et al., 2019; Schumacher et al., 2018; Huyghe et al., 2019; Fritsche et al., 2019) are tailored for practical use and independently validated.

## WARNINGS

### Intended use:

- Saliva kit is intended for the collection of human DNA from saliva sample.
- Single use only.

### Storage:

- Store at room temperature (15°C ÷ 30°C)

### Precautions:

- Wash with water if stabilising liquid comes in contact with eyes or skin.
- Do NOT ingest. See MSDS at [www.dnagenotek.com](http://www.dnagenotek.com).
- Small cap may pose a choking hazard.

## Customer care

For help and support, please contact our customer care team on +44 (0) 1270 623 179 or email [customer care@everythinggeneticltd.co.uk](mailto:customer care@everythinggeneticltd.co.uk)

(See <https://everythinggeneticltd.co.uk/contact-us/> for customer care opening times.)

CE

Manufacturer  
OÜ Antegenes

Registry code: 14489312

License number: L046857

Address: Raatuse 77, 50603 Tartu, Estonia  
in vitro

The Manufacturer's Authorised Representative  
Everything Genetic Ltd  
Registered Office Address:  
20-22 Wenlock Road, London N1 7GU, UK

[www.everythinggeneticltd.co.uk](http://www.everythinggeneticltd.co.uk)