

Specimen Preparation Instructions

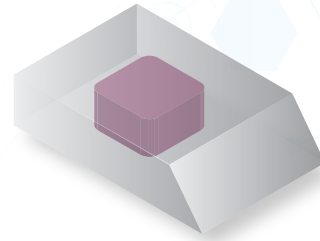
International



Formalin-Fixed Paraffin Embedded (FFPE) Specimen

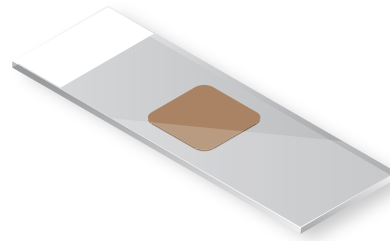
Paraffin Block (Preferred)

- Formalin fixed tissue block (including core-needle biopsies, fine-needle aspirates or malignant fluid)
- Tumor content: $\geq 20\%$ tumor nuclei



Unstained Slides

- **MI Profile (MI Tumor Seek Hybrid + IHCs):**
10 slides; 25 slides for additional tumor-specific testing (IHC, ISH, etc.)
- **MI Tumor Seek Hybrid™:** 10 slides
- Tumor content: $\geq 20\%$ tumor nuclei



Tissue Requirements for Block and Slides

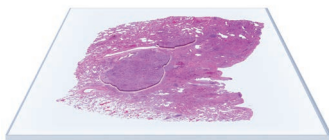
- **Molecular:** *Minimum:* $\geq 60\text{mm}^2$ total
Optimal: $\geq 250\text{mm}^2$ total

Specimens with a smaller tumor area may require additional specimen to be submitted.

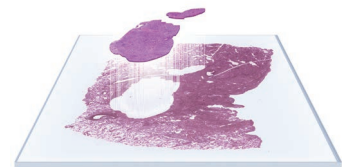
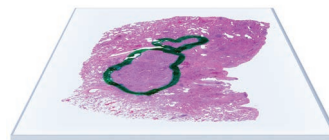
Tissue Inspection and Cell Enrichment

Caris Life Sciences® performs tissue microdissection to increase the proportion of tumor cells for testing and reduce non-cancer material diluting the tissue section. Microdissection is a crucial step to increase the chance of successful testing in certain limited tissue cases, as well as avoid testing with low density tumors that could result in missed alterations that could potentially impact treatment decisions made by oncologists. Trust Caris molecular profiling to maximize patient test results with tissue microdissection.

Caris Performs Tissue Microdissection to Enhance Patient Care



Tumor is 10% of total tissue



Enriched for tumor tissue

Higher Testing Success Rate: Microdissection isolates specific tumor cells for testing and reduces non-cancer material diluting the tissue section.

MI Tumor Seek Hybrid is inclusive of MI Exome and MI Transcriptome.



To order or learn more, visit www.CarisLifeSciences.com.
US: 888.979.8669 | CustomerSupport@CarisLS.com
Intl: 00 41 21 533 53 00 | InternationalSupport@CarisLS.com